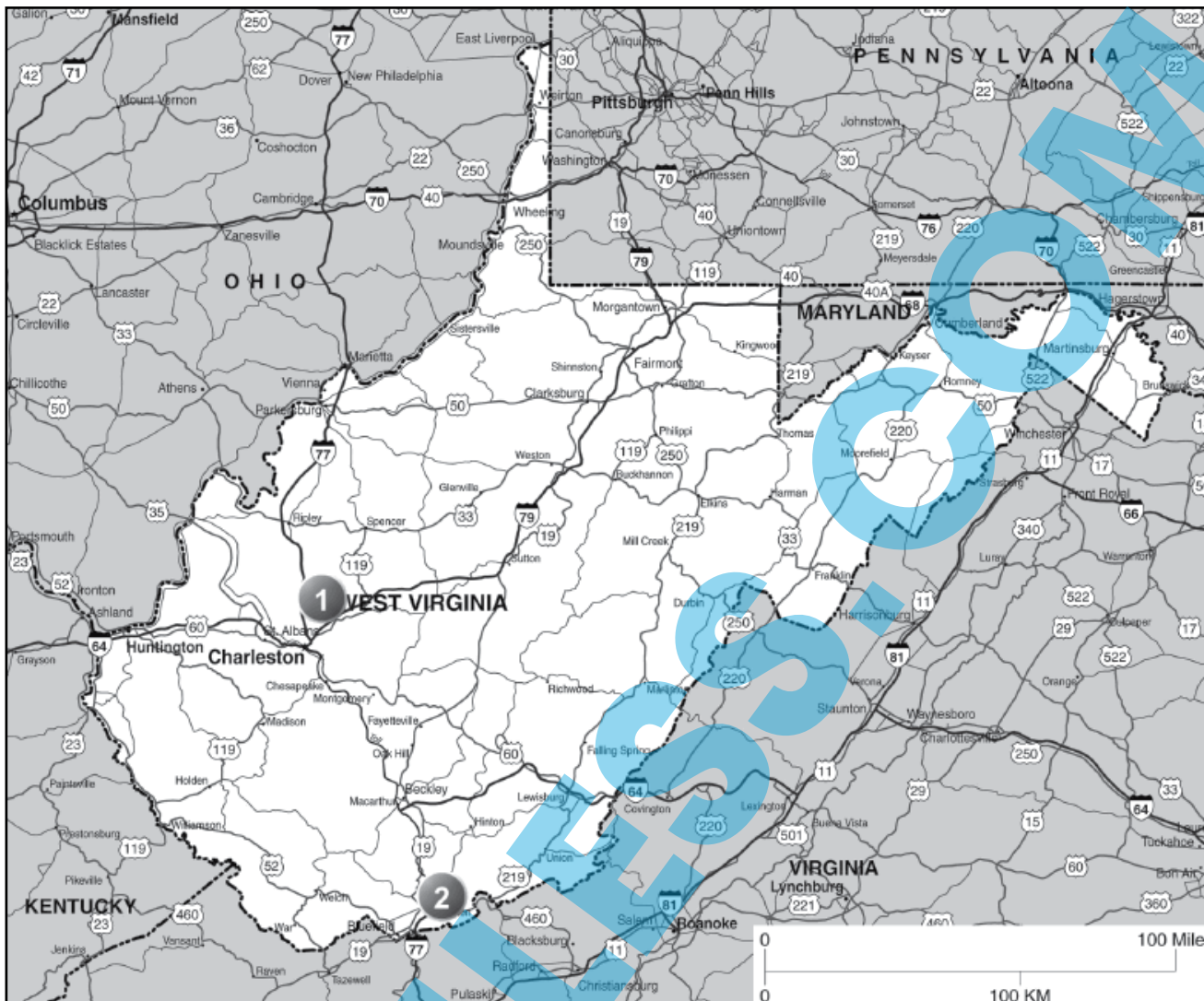


# WEST VIRGINIA



- 1 Kenna Rippling Waters Church of God Campgrounds
- 2 Princeton Brushcreek Falls RV Resort +

ALSO OFFERS: +=RENTAL ACCOMMODATIONS  
(CABINS, HOTEL ROOMS, ETC) DISCOUNTS - SEE PGS 268-278

## 1 RIPPLING WATERS CHURCH OF GOD CAMPGROUNDS

2771 Middle Fork Rd, Kenna WV 25248  
**GPS:** 38.575123, -81.606192  
**P:** (304) 988-2607  
**W:** www.ripplingwaterscampground.com  
**E:** ripplingwaterscamp@gmail.com  
**RV:** \$45\* **PA:** \$22.50\*

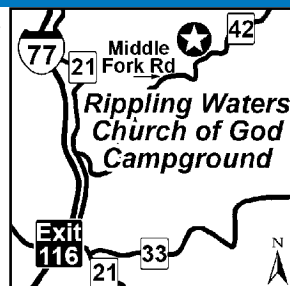
**I:** 100 total RV sites, can accommodate RVs up to 45ft, chapel service (Memorial Day through Labor Day weekends), 2 large pavilions, rustic cabins, conference center, 2 large cottages w/kitchens, biking, basketball, 2 fishing lakes (catch and release) and canoes. Rippling Waters is known far and wide for its chapel on the lake. Weddings are common on the grounds as well as large groups at the cottages and conference center.

**D:** Located 20 miles from Charleston and 23 miles from Ripley. Follow I-77 to exit 116, Haines Branch Road. Left at the stop sign onto RT. 21 North. RT. 21 North for 1 mile. Turn Right, just after crossing the bridge, onto Middle Fork Road. Campground is 3 miles; office driveway is on the Left after the small pond.

**N:** Reservations required. PA discount applies to nightly rate only. PA does not apply with another discount or special offer. PA is not valid Memorial Day, 4th of July and Labor Day Weekends. PA is not valid during Annual Camp Meeting (last week of July). \*Plus tax.



## Kenna WV



## 2 BRUSHCREEK FALLS RV RESORT

5127 Eads Mill Rd, Princeton WV 24740  
**GPS:** 37.45129, -81.06224  
**P:** (304) 431-1950  
**W:** www.brushcreekfalls.com  
**E:** reservations@brushcreekfalls.com  
**RV:** \$48-68\* **PA:** \$24-34\*

**I:** 52 RV sites, can accommodate RVs up to 65ft, some sites with BBQ grill, pavilion, furnished luxury suites and sleeping cabins, mini-golf, gem mining.

**D:** Located 10 mi from Princeton & 32 mi from Beckley. Regardless of which direction you are traveling you MUST take Exit 14. Traveling N on I77 take Exit 14 which is Athens Rd Exit (also known as State Rd 20). When you get to bottom of ramp turn R. Then turn L on Eads Mill Rd, follow it approx 1.9 mi to resort. When traveling S on I77 take Exit 14 which is Athens Rd Exit (also known as State Rd 20). When you get to bottom of ramp turn L. Then turn L on Eads Mill Rd, follow it approx 1.9 mi to resort.

**N:** Open year round. PA discount is valid Sun thru Thurs nights only. PA valid for 2 nights max. PA not valid during holidays, holiday weekends & special events. Reservations and drive-ups welcome. No fireworks, tents or canopies, washing vehicles or RV's at your site, and smoking. \*Plus tax. Rates vary based on type of site.



## Princeton WV

